



Welcome to your organiser pack for LFA2023: a quick-reference document to help you get the most out of your involvement in the festival.

You'll find an overview of the festival and LFA2023, ideas of how to get involved, inspiration from 2022, as well as FAQ and all key dates for LFA!



What is the London Festival of Architecture?

The London Festival of Architecture (LFA) is a month long celebration of architecture and city-making, taking place every June across London. The Festival's mission is to act as a vehicle for change, by making discussions around architecture more accessible, providing the platform to test new ideas and promote emerging talent, with an aim to create a better, more inclusive London for all in the long term.

LFA is a collaborative vehicle for ideas and exploration, bringing a critical lens to city-making while looking forward with hope, so we can make our city greener, healthier, more inclusive and equitable. We build long-lasting relationships with organisers across London, and work year round to empower them to realise their visions and goals for LFA. Ultimately, our aim is to generate positive long-lasting change for visitors and residents alike.

LFA is run by New London Architecture (NLA), the world's leading centre for the built environment industry. The Festival returns to London on 1-30 June 2023 with the theme 'In Common'.

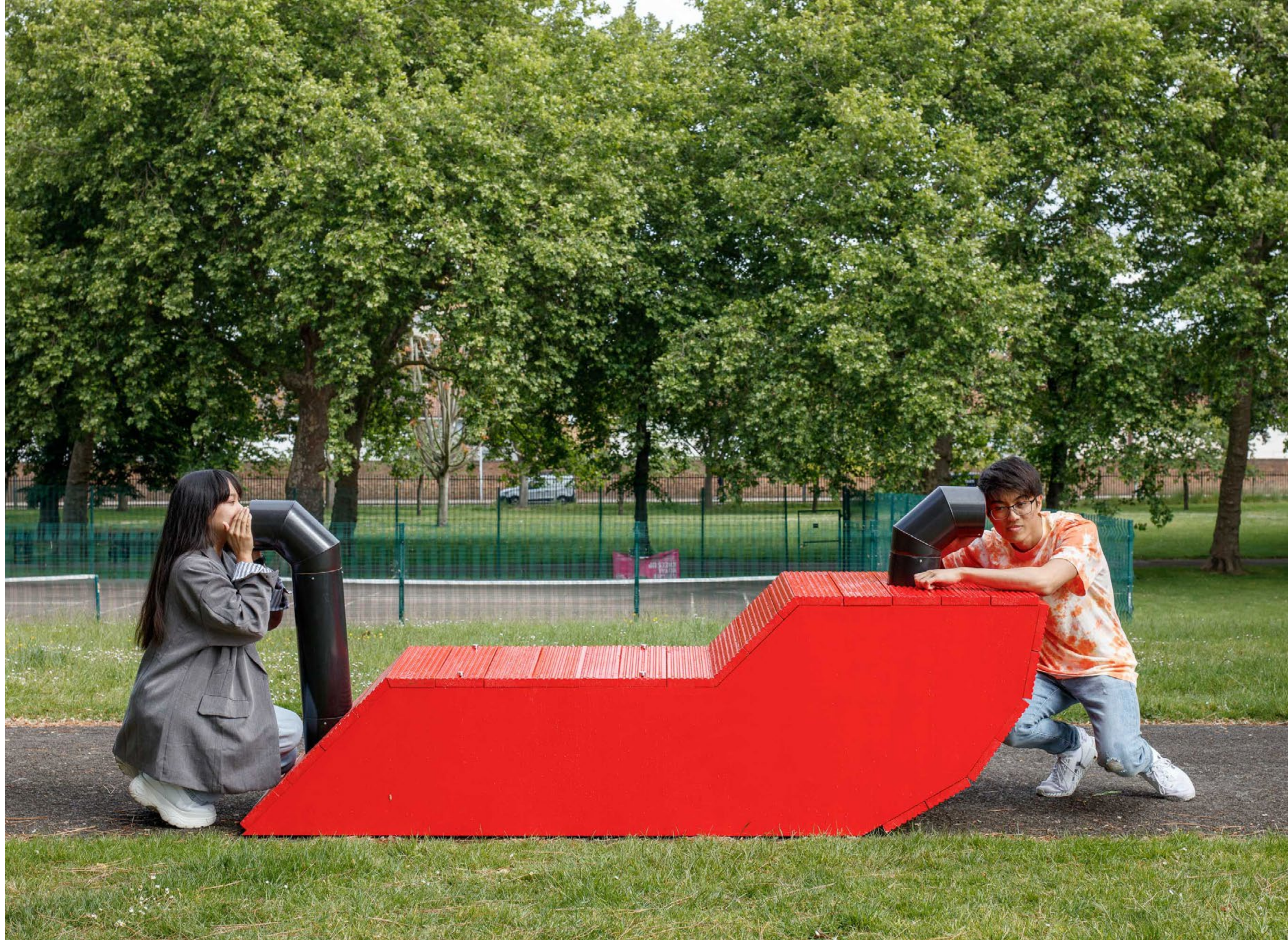


Who is the festival for?

The Festival is for anyone with an interest in London's architecture and built environment. LFA doesn't target specific categories of the built environment industry; on the contrary, it brings together the public and the profession.

The Festival expands on the traditionally understood concept of 'architecture' through discovery, debate, learning and activism open to all, giving agency to the public, alongside the industry, to challenge, interrogate and celebrate their city.

From its founding in 2004, LFA has worked with boroughs, developers, architects, and community groups to provide a platform for discourse and meaningful change. Together we have built temporary architectural interventions, public realm improvements, outdoor exhibitions, walking tours and workshops, and facilitated the development of rich cultural programmes which bring together the public and the profession. For us, architecture goes beyond the skeleton of a building, it is the in-between spaces, the landscapes, the people who make them, work and live in them, it can place defining and community building.





LFA2023: Overview and theme

We can't wait to take over the city once again for a month of celebration, interrogation and experimentation, helping make our city a more accessible and equitable space for all.

For LFA2023, we will be exploring the theme of 'In Common', a theme that arrived through our Theme Open Call with support of our 2023 Curation Panel. This is the third year LFA has asked its network of event organisers, supporters and followers to suggest a theme for the festival.

As always, we look forward to working with individuals and organisations, old and new alike, to stage their own festival events as part of June 2023. We've already had some exciting conversations with previous organisers and can't wait to see all the proposals when the Open Call goes live on January 10th.

Over the next coming months, we'll be sharing some resources, top tips for events and reflections on the theme to inspire you for your very own LFA event. To start with, the LFA team have put together some thoughts exploring our 2023 theme.

In Common

We have more in common than we know. But how do we create and shape the space we share: our city? How do we make the most of what we have in common—and explore the things we don't?

We live in a state of multiple crises: climate, health, class and race has highlighted a wide spectrum of systematic inequalities our cities hold; from lack of affordable housing to obvious gaps in provision of greenspaces and other natural resources. Discussion and debate online and in person can revolve around our differences. But this is not inherently negative; discussing what we don't have in common is an important part of improving our built environment, ensuring we are working with those with different lived experiences who interact with cities in the ways that we don't. In some cases, architects, developers and planners may not have much in common with the people who use the spaces they're creating—what effect does this have on our city?

[Read more on the LFA website](#)

LFA2023: Curation Panel

Each year LFA is delighted to work alongside our Curation Panel to shape the festival theme and programme. This year's panel includes key figures from across the built environment and beyond, including:



Tara Gbolade

Co-director of Gbolade Design Studio and Mayor's Design Advocate



João Guarantani

Senior Programme Manager, Architecture, Design and Fashion at British Council



Melodie Leung

Associate Director at Zaha Hadid Architects



Fiona MacDonald

Co-Founder and Director of MATT+FIONA



Nic Monisse

Design Editor of Monocle magazine and host of Monocle On Design



Binki Taylor

Partner at The Brixton Project



Jordan Whitewood-Neal

Architectural Researcher, Designer and Co-founder of DIS/



Hadi Yassine

First year Architecture student at Kingston University and LNST Scholar for 2022/3

"Drawing more from the social contemplation of what we as individuals and communities have in common, this year's theme reminds us that not only are people at the heart of architecture but that our similarities and differences are vital interrelations to acknowledge. But as well as the question of what, I think another important question is where do we have in common? What places can and do we commonly go, and where can we not? The idea of the commons, common space, and commonality are all up for grabs, to either idealise or critique. Access to, in and around the city is dependent to an extent on the accessibility of public spaces, so when we ask where do we have in common, we are also asking, where are we truly able to go freely and spontaneously, and where is only common for some?"

Jordan Whitewood-Neal



How can you get involved?

Organise

What makes LFA unique is that its programme is people-led and curated by event organisers; we believe in the power of collaboration with the people who live, shape, and truly know London. It's the breadth and creativity of this community of event organisers that delivers such a varied and engaging programme of events for the festival each June.

Below you can find information on what events can be part of LFA, alongside examples of highlight events from previous editions of the festival. Additionally you can also find out the first steps to making your LFA2023 event a reality.

FAQ

For answers to commonly asked questions about LFA events, head to the end of this pack. For general queries regarding LFA, head to the [FAQ page on the LFA website](#).

Support

LFA could not happen without the contribution of our generous supporters and partners who make the Festival possible. Each year we work with a range of emerging and established organisations from within and beyond the industry to deliver the festival. The Festival also receives support from the Mayor's Office as one of the Mayor's Design Advocate organisations.

Supporting LFA is a great way to engage your organisation, clients and community, in some of the most important conversations in the industry and the wider world, while celebrating London as global hub for architecture.

We have a variety of sponsorship packages which help support the festival, to find out more head to our [supporters page](#), or alternatively email info@londonfestivalofarchitecture.org.



Why put on an LFA event?

All of our event organisers have a different motivation for organising an event as part of LFA.

- Architecture practices might want to gain publicity for their practice and showcase their work or research. Perhaps a practice is known for one typology and wants to break into another market or challenge stereotypes of their work.
- Community groups may want to talk about a cause that we should know more about or just want to share their local area with a range of other Londoners.
- Museums and cultural organisations often use the month of June as an opportunity to stage architectural exhibitions and help broaden and diversify their audience. Embassies often use the festival to showcase the work of their architects in London and beyond, exploring what London can learn from other cities and countries.
- Others might be focused on combatting some of the issues of our day or empowering the next generation of architects. LFA has a proud record of helping many people launch their idea or company during the festival.

Hear from some of our previous organisers about what they love about the festival and why they put on events:

"It was great to be able to showcase the history and architecture of the Supreme Court building to a wider and interested public as part of LFA2022."

Cloe Ofori, Supreme Court of the UK, Tour of the Supreme Court

"It was a brilliant experience bringing the Wiggle Wonderland pavilion to LFA2022. The LFA team were extremely supportive and helpful throughout. It was an incredible opportunity for the children and young people to share their dreams and hopes for their future cities and was so rewarding to see the public interact and activate the pavilion throughout the month."

Lucy Grainger and Beau McCarthy, Wiggle Wonderland

"Thanks to the timely intervention of LFA, what started off as a year of disrepair and despair, became a summer of celebration and affirmation for Leigham Court Sheltered Housing Campaign Veterans. The sensitive support from the LFA team throughout the processes of planning and development, made all the difference to ensure our delivery of an offering, representing a diverse London at its best. We are most grateful to the LFA team's efforts on the journey towards participation of this hard-to-reach group of Diverse Elders."

Susan Okokon, Excavating Diversity, "A Modernist Gem: The Battle for Leigham Court Sheltered Housing Scheme"

What events can be part of LFA?

Organisers create the foundation of the Festival by connecting with the city through a variety of activity and events,

Each year the festival comprises a varied programme of debates, talks, architectural installations, tours, workshops, film screening, Studio Lates, exhibitions, digital events and so much more.

The types of events might be varied but they all share a common purpose to engage their audience in thinking about the people and places shaping our city and built environment.

Below are some examples of highlight events from previous editions of the festival that have come through our open call.





Exclusive Tour of New Museum of London at West Smithfield

Organiser: **Stanton Williams x Museum of London**
Event Type: **Project Tour**

Stanton Williams with the MoL offered an exclusive opportunity to go behind the scenes of one of the largest cultural schemes in Europe. Lead by the architects themselves, participants learned about the challenges of transforming a campus of listed market buildings into a 21st century cultural destination, while also saving the historic site for generations to come. With high vis and helmets on, participants entered the now construction site to see the progress and ambitions of the new cultural venue first-hand.



“A MODERNIST GEM”: The Battle for Leigham Court Sheltered Housing Scheme

Organiser: **Susan Okokon, EXCAVATING DIVERSITY**
Event Type: **Exhibition, Talks and Filming Screening**

Responding to the annual theme of 'Act', this series of events documented the 'three-year battle', in which a group of diverse elders led by British-African Caribbean Co-Chair, Anne Okokon, joined forces with community activists and architectural mavericks, in an attempt to prevent demolition and restore their “Modernist Gem” of a Sheltered Housing Scheme by Kate Mackintosh- changing architectural history. The exhibition, film and talk series was led by campaign co-chair Susan Okokon and hosted at The Rotunda Hall, Cressingham Gardens.



Children's Rights and Dreams for the Future, Wiggle Wonderland

Organiser: **Lucy Grainger and Beau McCarthy with support from Almacantar**
Event Type: **Installation + Events**

For LFA2022, Wiggle Wonderland was brought to St Giles Square for explorations around what children and young people want for their future. Working with children from schools across London, the pavilion was activated with banners of work were created by in response to themes of gender, equality, climate activism and racism, alongside a series of family events and workshops with leading artists and design facilitators.



Innovation through Sustainable Materials in the Royal Docks

Organiser: **University of East London x Grimshaw, with the support of the Royal Docks and Tate & Lyle**

Event Type: **Workshop**

The UEL, in collaboration with Grimshaw and, organised a hands-on session exploring the potential of carbon neutral innovative materials in architecture and design. The workshop enabled participants to explore agricultural by-products such as hemp, sugar cane or straw, mixed with different binders including locally sourced clay, as new building materials. Following the workshop, the group calculated the carbon footprint of the materials made.



Delivering an Inclusive Design Legacy

Organiser: **LLDC**

Event Type: **Walking Tour + Panel Discussion**

As part of the festival, the London Legacy Development Corporation (LLDC) hosted a tour and panel discussion exploring the concept of delivering an inclusive design legacy, the tools and processes delivered in Queen Elizabeth Olympic Park and how we can use these lessons to collectively act and create a more inclusive London.



A City for Everyone: A Beginner's Guide to Urbanism

Organiser: **Czech Centre**

Event Type: **Talk + Panel Discussion**

The first week of June saw Osamu Okamura and Manijeh Verghese provide a crash course in urban planning, inspired by Okamura's book City for Everyone, and using their respective experiences from Prague and London. Okamura and Verghese shared examples of good practice to help us understand what complicated, tightly packed and fragile organisms cities are and how to make them equitable and liveable. This event was hosted by Czech Centre at the Czech Embassy Cinema, London.



Touch Tour of RSBC Life Without Limits Centre and Sensory Clay Workshop

Organiser: **EPR Architects**

Event Type: **Building Tour + Workshop**

For June 2022, EPR Architects chose to highlight their project: Life Without Limits Centre for RSBC (Royal Society for Blind Children) with a series of immersive touch tours led by the architects themselves, alongside an immersive sensory clay workshop led by Clayground Collective. Both events aimed to encourage participants to fully engage in the centre, which is an exemplar of inclusive design, as well as think of their interpretation of an animated city.



Studio Lates

Since LFA started in 2004 an important part has been our Open Studios / Studio Lates programme. These have been an opportunity for practices to open their doors both, to the profession and the wider public — helping to demystify their work. Taking place every Friday during the Festival in different areas the event is fanatic's way to promote the excellent architectural talent in London while connecting practices with new audiences. Whether it's an exhibition, drop-in design surgery, a talk or simply a networking event — each practice makes their Studio Late their own. Designed so visitors can drop into a number of practices in one evening.



→ Our LFA2023 Studio Lates areas will be announced in January 2023. If you'd like to be the first to know more, or if you have any questions related to Studio Lates, please contact the LFA team at info@londonfestivalofarchitecture.org or by calling 020 7636 4044. Please note, this number goes to the NLA office, when calling please ask for the LFA team.

Still need inspiration for your event?

- Learn more about the LFA2023 theme with [this essay from the LFA team](#)
- [Listen to our theme related podcasts](#), including with LFA director Rosa Rogina and Curation Panel member Binki Taylor
- Explore our archive of previous festivals and events by checking our [Festival history page](#) or [watch our LFA 2022 Wrap Up](#)
- [Subscribe to the LFA Newsletter](#) to keep up to date with information and inspiration from the LFA team and community
- Sign up for an LFA Organiser calls and surgery days or [check out the LFA2023 resources in the account section](#)



Ready to start creating your LFA event?

We will launch our Open Call on January 10th, asking for event proposals which respond to this year's theme 'In Common'.

To submit an event for LFA2023, you will need an account on the LFA website. Accounts are unique to your organisation.

If you don't have an account, you can [create one here](#). Once your account has been approved, you will be able to submit your event submission by clicking the button 'Submit my event'.

You'll need to provide us with as much information as possible so that the LFA team and our curation panel can come to an informed decision about your event.

You will need to complete one submission per event, with each event submission charged separately.

The LFA team will then review within 7 days after they have come in, so the sooner you submit your event, the sooner you will receive feedback and the status of the event. Please don't leave it until the last moment!

You can find an LFA Event Checklist in the LFA account.

Next steps

On the next page, you will find a simple submission process guide for how to submit your event proposal. For more information, head to the LFA website account section.

Submission fees

You will need to complete one submission per event, with each event submission charged separately. The submission fee (£180+VAT Early bird, £280+VAT Standard) covers the administrative support of your event including promotion from LFA and merchandise, as well as organiser perks including entrance to the LFA opening party. You will receive 30% discount for every additional event submission.

LFA is committed to supporting charities, non-for-profit organisations, students, academic bodies, emerging designers, small practices (up to 10 employees) and community groups and individuals who traditionally may not be included in discussions around architecture. Therefore, we offer free of charge submissions to all the above. All NLA members will receive a 30% discount. If you believe you qualify for a concession rate, you will be able to mark this as you submit your event, and the fee will be removed. If you fall outside the categories outlined above and are unable to pay the fee, please get in touch and we will review on case-by-case basis. Note, every submission is reviewed and free submissions will not be approved if the criteria is not matched.

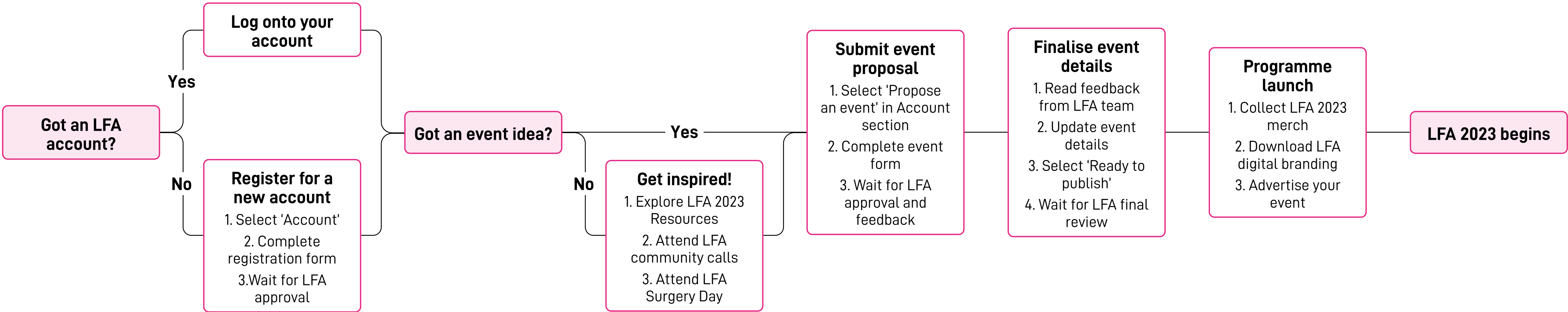
Deadlines

The deadline for submitting a proposal at an early bird rate is 10th February. Standard entries are open until March 3rd. Entries from Patrons and Partners continue until 17th March.

LFA is run by a small but extremely hardworking festival team. We're keen to accept all good event proposals whenever they're suggested but late entries cause a huge administrative burden on the team.

Therefore, all event proposals after 17th March will not be accepted.

Submission process



LFA 2023 key dates

You can find a full and up-to-date set of festival dates and deadlines in the LFA Organisers account section.

For the headline dates, please refer to the following:

January—February

10th January
LFA Events Open Call & Destinations Reveal

25th January
LFA Community Call

We'd love for you to join the LFA team and our community of event organisers to dive into LFA2023 offer some helpful advice and take your questions.

27th January
Organiser Surgery Day (1)
Want to discuss ideas before submitting your event? The LFA team will be available for one-to-one sessions. Email info@londonfestivalofarchitecture.org to book a slot, with the subject 'Organiser Surgery Day (1)'.

8th February
LFA Mentor Surgery day
Are you a first time LFA organiser and need help from someone who's done this before? Join us to chat through your ideas with people who've done this before. Email info@londonfestivalofarchitecture.org to book a slot, with the subject 'LFA Mentor Session'. Please include your name, brief information on your event and what you're looking for help with.

10th February
Submission deadline for events (early bird)

March—May

3rd March
Submission deadline for events (standard rate)

17th March
Deadline for Patron and Destination events

31st March
Organiser Surgery Day (3)
To book a slot, simply email info@londonfestivalofarchitecture.org with the subject: 'Organiser Surgery Day (3)'.

6th April
Event information lock
This is the deadline for finalizing event details. After this time you no longer have access to your event.

19th April
**LFA Community Call—
Marketing and Comms Q&A**
Want to learn more about how to market your event? Join the LFA team and our community of event organisers for a session exploring the marketing and promotion of your LFA event. There will also be an opportunity to take questions.

9th May
LFA 2023 Programme Launch

15th–19th May
LFA Merch collection

June—July

1st June
Festival Begins!

2nd, 9th, 16th and 23rd June
Studio Lates

28th July
Event Feedback Form + Imagery Deadline
By submitting an event you agree to complete LFA's feedback form, as well as upload any photos or videos from your event. More info can be found in the account section.

LFA event FAQ

Here you can find the answers to commonly asked questions about LFA events. For general queries, head to the [LFA FAQ page](#).

If you can't find the answer to your question, please email the LFA team at info@londonfestivalofarchitecture.org. Please be aware that although we will try and respond as quickly as possible, we are a small team and responses may not always be immediate.

Do I need to be an architect to be involved with the festival?

No! What makes LFA unique is that its programme is people-led and curated by event organisers; we believe in the power of collaboration with the people who live, shape, and truly know London. It's the breadth and creativity of this community of event organisers that delivers such a varied and engaging programme of events for the festival each June.

Do I need to have run an event before?

No! We work year-round to help new individuals and organisations feel empowered to stage their own festival events and welcome everyone into the conversation around architecture and our city. This is done through LFA Organiser calls, surgery days as well as the resources in the account section.

Does my event have to last the whole of June?

No, you can choose how long your event lasts for, it can be one hour, one day or the whole month! The length also depends heavily on the type of event. For example a workshop may just last one or two hours on one day, whereas an exhibition could last a week or a month.

What kind of information do I need to submit to the festival?

To start with you will need an Event Title, a description of the event, and an image that captures the event. We will also need to know whether you have a venue secured yet or not. Other desirable information, along with a complete checklist can be found in the account section.

How many events can I submit?

Each organisation can submit up to four events during the festival. For multiple versions of the same event, there is a limit of two versions of the same event. This is reviewed on a case-by-case basis. Please note, each event will be charged separately.

How will visitors know our event is part of LFA? / Will LFA be providing any resources for organisers?

Yes, each year LFA provides a range of digital assets and physical merchandise for organisers to use. You'll find a range of material with your LFA account once the open call goes live. (Still using the old LFA logo, this is your place to go!)

Do organisers need to raise sponsorship for this event?

The LFA team consists of just a small team and therefore much of the funding we generate goes directly into supporting the events we run. Unfortunately, this means that we're not able to offer funding to support your events. If you are not sure where to start with funding, why not sign up for one of our LFA Event Organiser surgery days. However, each year we partner several event organisers with free venues across the city. The earlier you submit your event proposal, the opportunity we have to offer help and guidance. There is less scope for us to help events which are submitted closer to our deadline. If this is something you are interested in, please highlight on your event submission. If you need funding to make your event happen, you are free to approach your own sponsors, if necessary, but you should be careful about promising benefits that can only be delivered by the LFA team or LFA website. You might like to come to one of our community calls or surgery days to explore the ideas above or hear about other ways of seeking your own sponsorship or covering your costs.

How does ticketing work for LFA?

Each event has its own ticketing system, we recommend using Eventbrite. We put together a document on how to set up and manage an Eventbrite event, you can find this in the account section/here.

How do I promote my event?

The LFA team will help promote all events, but we also need your help to market and promote your own event amongst your own audience. This works to everyone's benefit—the more event organisers promote their involvement with LFA, the wider our audience becomes. The more people the festival reaches the more people you can attract to your event. We put together some top tips for promoting your event, you can find this in the account section/here.

What do I need to do after the festival?

By submitting an event you agree to complete LFA's feedback form, as well as upload any photos or videos from your event. We ask this as want to know how your event went and how many people attended. We also want to make sure your event is captured in our LFA archive. The feedback form can be found in the account section of the website. We need these returned by 28th July 2023.



LFA2022: Recap

Despite the incredibly challenging time many have faced during the past two years, LFA was overwhelmed with support as it returned across London at full power with the biggest programme of in-person events in June 2022. By temporarily occupying and reshaping London's buildings and public spaces, LFA's was able to generate positive long-lasting change for visitors and residents alike.

Responding to the state of the world, LFA never felt timelier, with our organisers responding passionately with a diverse range of events and activities centred around our 2022 theme of 'Act'. From reinterpreting familiar places through to new installations and activations, redesigning public spaces, to workshops which encourage participation and learning, to talks and walks that open the conversation around our city to new audiences, the 2022 programme reflected not just London now, but a vision of what it could be. Highlighting important issues as well as presenting potential solutions, the theme encourages our audiences to re-think what architecture is, who it is for and how we interact with it.

LFA 2022 signalled not only a great desire for the return of in person events but also a great excitement from our diverse event organisers to reconnect and engage with our audiences, whether that be through showcasing work or

setting provocations to encourage discussion and participation. LFA 2022 engaged a public audience of approximately 500,000 across 433 events this June and is the largest event of its type in the world.

While LFA is across London, each year we have several key Destinations where a concentrated hum of activity takes place. The 2022 destinations included Queen Elizabeth Olympic Park, the London Borough of Camden, South Westminster, the City of London and the Royal Docks, with each area having a trail connecting key sites and events, along with the wider programme of activity.

[Watch our LFA 2022 Wrap Up video](#)

If you would like to contact the London Festival of Architecture team, please email info@londonfestivalofarchitecture.org and we will get back to you as soon as possible.

Alternatively, you can phone the LFA team 020 7636 4044. Please note, this number goes to the NLA office, when calling please ask for the LFA team.

To be the first to find out about LFA news, please [sign up to our newsletter](#).

Follow LFA on social media:

