

The Green Thread

andre kong studio
WAYWARD

Reconnecting the community to their streets

What attracts people to a place is its sense of potential; potential for a meaningful experience, with a strong local identity, yet full of unexpected discovery, even on our local high street - we want somewhere to return to again and again.



From the moment you arrive at Hotting Hill Gate the Green Thread immerses you and draws you out into the street to explore

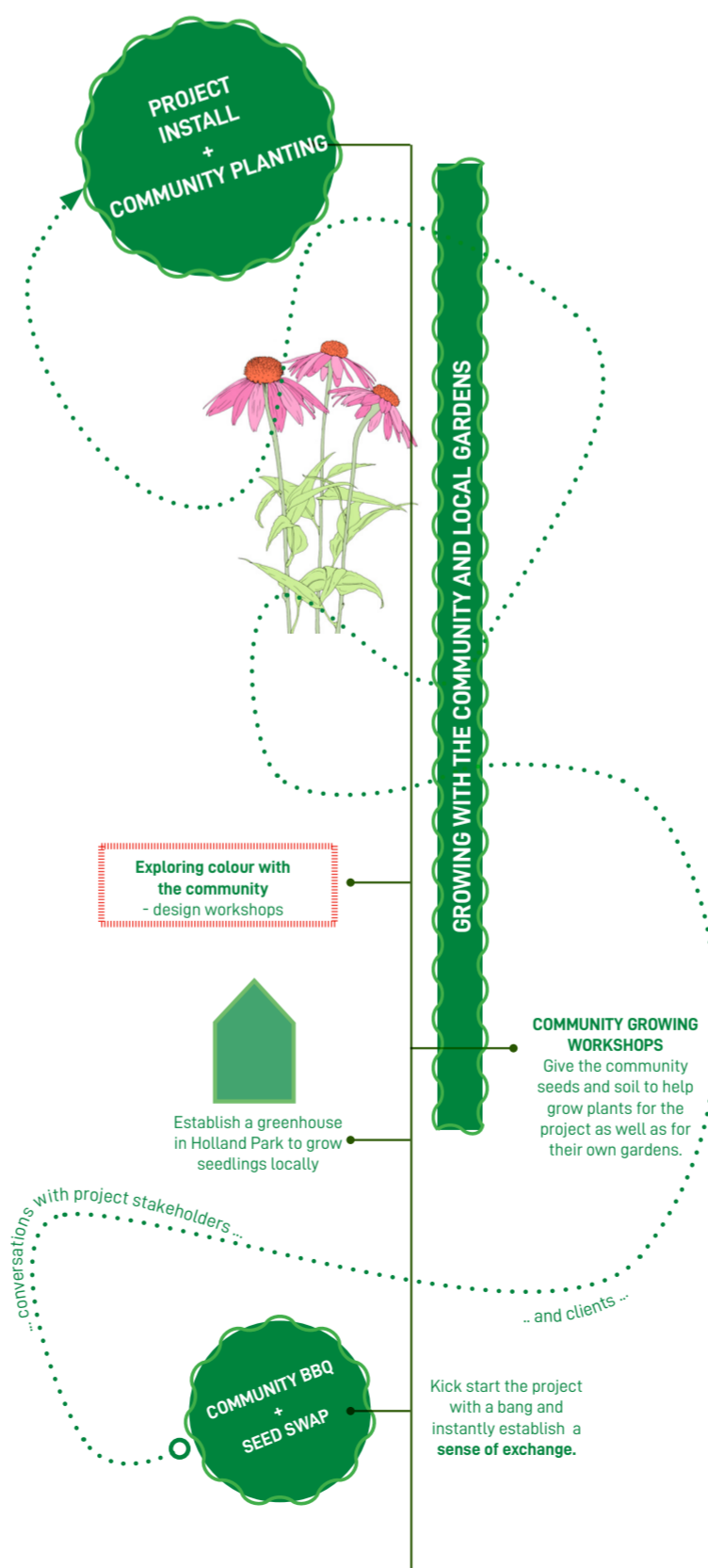
Proposal

Notting Hill Gate has a rich and vibrant history, layers of cultural heritage, diverse communities, unique perspectives and multi-generational voices. Much is currently hidden away behind closed doors, only brought out for 2 days a year with the carnival. This diverse, local and contemporary history should be celebrated every day of the year and breathe life into the future of the street.

These streets used to be safe, playful, full of family activities. Since the 50s they have become transitory and grey. We want to bring the communities green spaces, their back gardens, into the street - and not just the plant life - we want the colour, the stories, to return the streets to their former glory. The Green Thread will wind it's way across the high street, stitching it together, connecting neighbourhoods, weaving through the community, connecting people from their back gardens to the street.

A series of verdant installations inspired by multicultural planting full of fragrance and colour combined with playful street games gives new life to grey pavements and creates fun way-finding paths through the new heart to the spaces beyond.

At the core of the project sits the community, helping to grow the project in their own back gardens, really bringing their gardens out into the streets.



Sunny Plants



Hylothelephium telephium Eryngium Rosemary Grasses

Shady Plants



Liriope Euphorbia Ferns Hellebore

Climbers / Vines



Jasmine Chocolate Vine Honeysuckle Hedera Helix

Materials



Corrugated steel Steel cable + vines Recycled plastic board Gradient colours



Please scan this QR code to submit feedback on the proposed competition entry

The Green Thread

Reconnecting the community to their streets

andre kong studio
+
WAYWARD



The installation threads across the street, connecting key existing infrastructures to create a luscious verdant environment.

The Components to thread together



- Bench



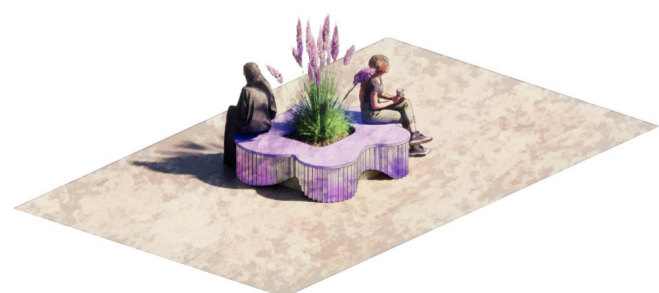
- Reused existing benches



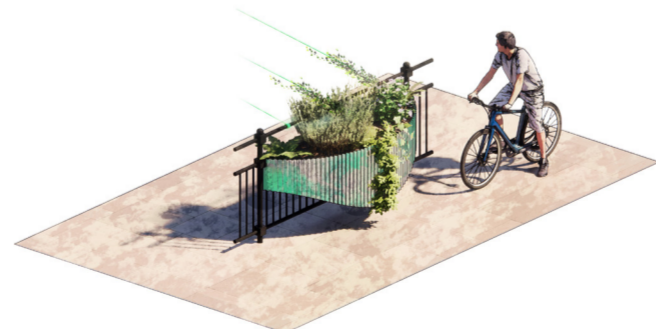
- Small planter



- Double planter



- Existing planter cover



- Deep planter



- Aerial planting with benches



- Aerial planting over tube entrance



Wayward + Andre Kong Studio

AKS - Set up by the Portuguese-born British architect Andre Sampaio Kong, the design and architecture studio explores how material tradition, context and technological innovation can be unexpectedly combined to alter the way we develop fun and elegant solutions for sustainable and inclusive buildings, objects and experiences.

Wayward - Wayward is a London-based landscape, art and architecture practice – an award-winning collective of designers, artists and urban growers. Since 2006, Wayward has pioneered new methodologies in the creative use of underutilised land and meanwhile spaces, transforming derelict sites into large-scale, design-driven spaces that engage local communities and inspire international audiences.