

Re-Green Notting Hill

George King Architects X Grow 2 Know

GEORGE KING ARCHITECTS

GROW2KNOW



Proposal

Our vision is driven by the power of plants to reconnect people to nature and each other. Our aim is to re-green Notting Hill Gate by installing a series of small, sculpted pocket gardens that together create a new undulating landscape for the community to explore, play, relax and perform.

The design of our gardens draws on the colours, patterns and traditions of the local community. The Notting Hill Carnival and the tradition of upcycling discarded oil drums to create Steel Pans has inspired us to create our gardens entirely from upcycled industrial oil drums. We hope that the transformation of a discarded waste product containing toxic and polluting oil into a beautiful, lush community garden will be an inspiration to help us live more sustainably and sends a powerful message of our need to move beyond oil and other damaging fossil fuels.

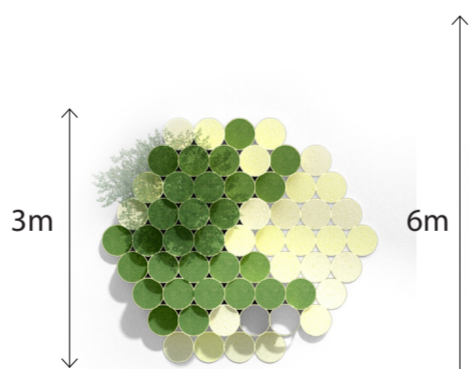
The oil drum is the basic module of our gardens and will be transformed for a variety of uses including planters, seating, insect habitat, stages and lighting. They will be brightly painted and decorated with patterns inspired by the eclectic range of goods from around the world found in nearby Portobello Road Market.

Re-greening as an educational tool is at the heart of our design so each garden will include a large number and variety of plants. Each plant will include an infographic providing information about the plant and its cultural significance to the diverse communities of Notting Hill and a QR code which can be scanned to find it in local shops and restaurants.

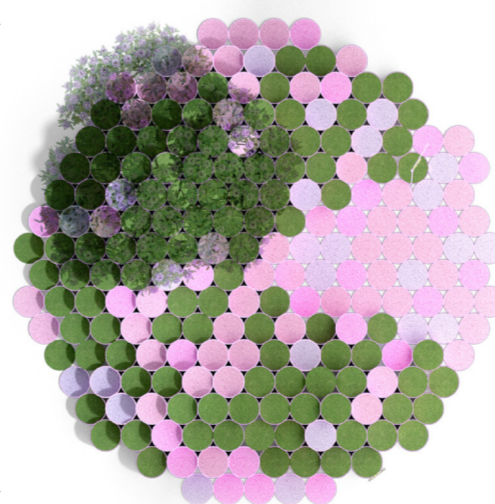
Site Plan



Small



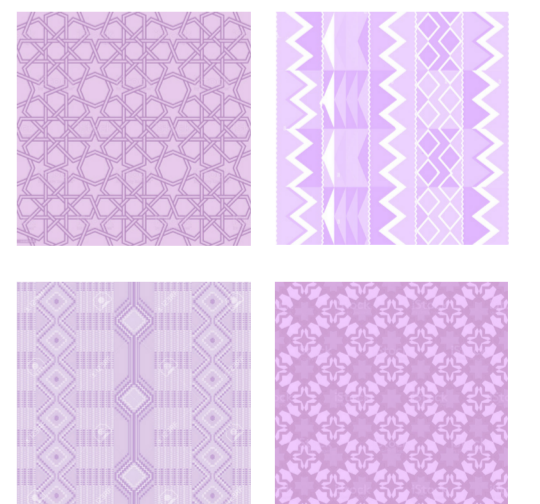
Large



Example planter info-graphic



Example patterns from Portobello Rd



Please scan this QR code to submit feedback on the proposed competition entry



Re-Green Notting Hill

George King Architects X Grow 2 Know

GEORGE KING ARCHITECTS

Grow2Know



Modules



Planter



Habitat



Light Box



Water Feature



Seating



Stage



Pavers



Signage / Wayfinding



Team

Our team is a collaboration between two local West London practices who share an ethos and passion for using thoughtful design, horticulture and place-making to create imaginative and inspiring works that bring our communities together, reconnect them with nature and create a positive transformation within our city.

George King Architects work within the disciplines of architecture, art and landscape. Their research-based process responds to the unique opportunities and challenges of each site drawing on its natural and built environment, its history, culture, community, people and stories to develop bespoke projects that are imaginative, enduring and sustainable.

Grow2Know's heart lies in reclaiming space and reconnecting people with nature and each other. Putting community at the forefront in the creation of public, outdoor spaces, Grow2Know is pioneering a model that pivots on consultation, collaboration, and place-making. Building partnerships to activate spaces, the grassroots non-profit is committed to inspiring a culture change to implement more sustainable systems that promote biodiversity, circular economies and regenerative practices.

