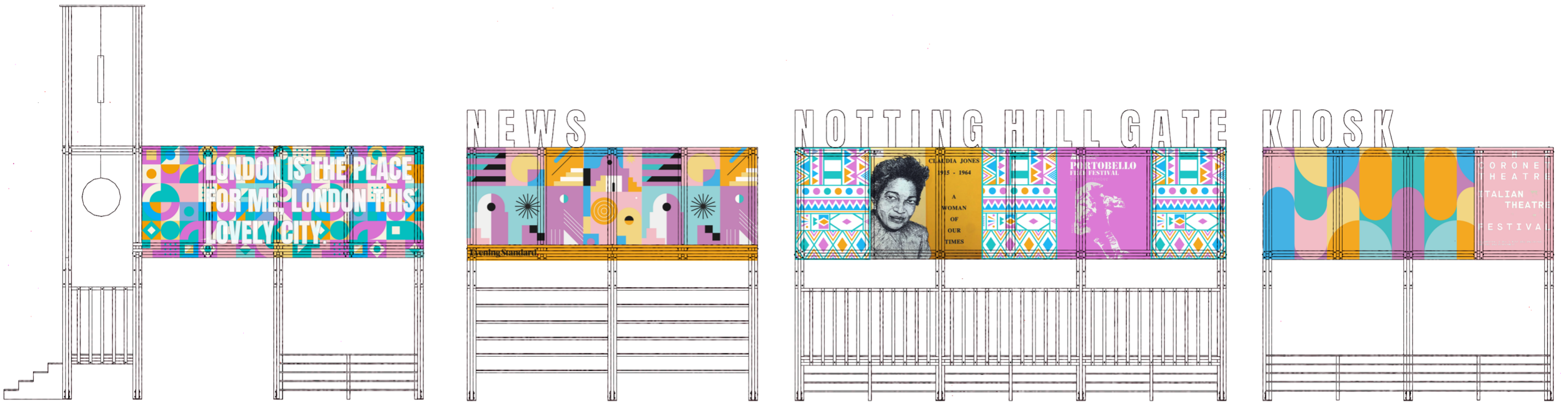


Colonnade of Colour

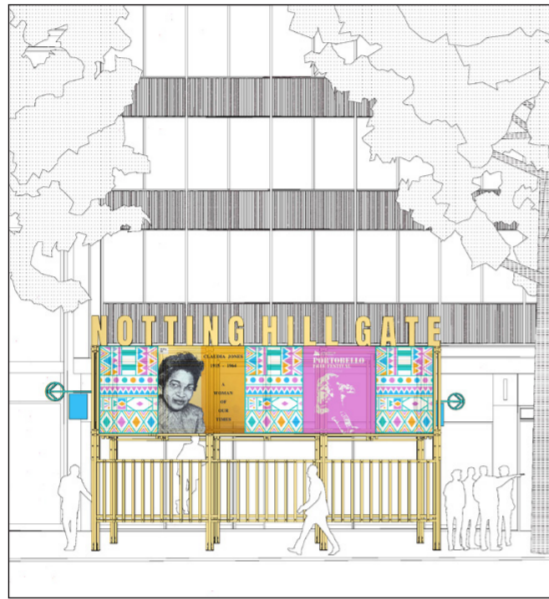
thinkFoundation/Maich Swift/Wood Street Walls/Linett Kamala/Greg Bunbury



A colourful fabric frieze links the structures and provides a canvas for a changing programme, depicting local stories, myths, events, installations and important figures



The family of structures make places for gathering. A clock tower defines a meeting point. Wayfinding, projections, colour, signage and artist projects might extend to other surfaces adjacent to the structures for example the underside of the covered walkways



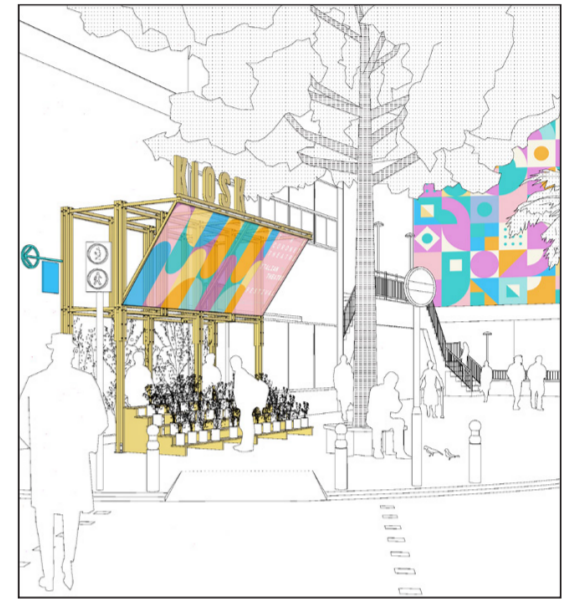
The multi-use timber structures are wrapped in a colourful fabric frieze. Large lettering sits on top of the frames providing a coherent visual language for Notting Hill Gate, which incidentally is an anagram of Hitting Tollgate. The lettering can be simply replaced based on the use of the space



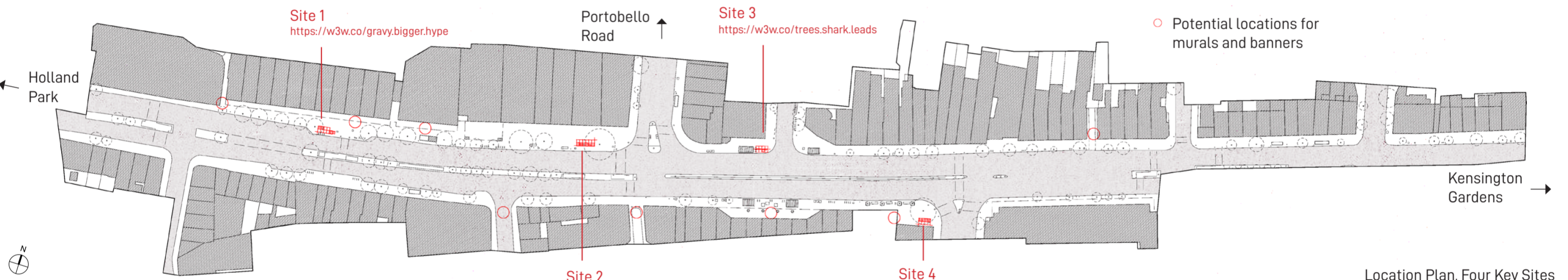
The structures are conceived to allow for improvised events and flexible use. The see-through fabric, which has an air purifying treatment, might fill gaps in the main streets. These can be the location of artist's projects or temporary signs for the area's community and arts activities



An awning covers a news and magazine stand, which doubles up as a location for buskers, community billboard or bike repair shop, and marks the fleeting moment of access to and from Notting Hill Gate Underground station



The local community will be encouraged to use, curate and engage with the shifting programme of decoration and use. Street planting, gardening workshops, public art and a flower kiosk, which switches to a market stall on Saturdays, combine to create a strong identity for the area



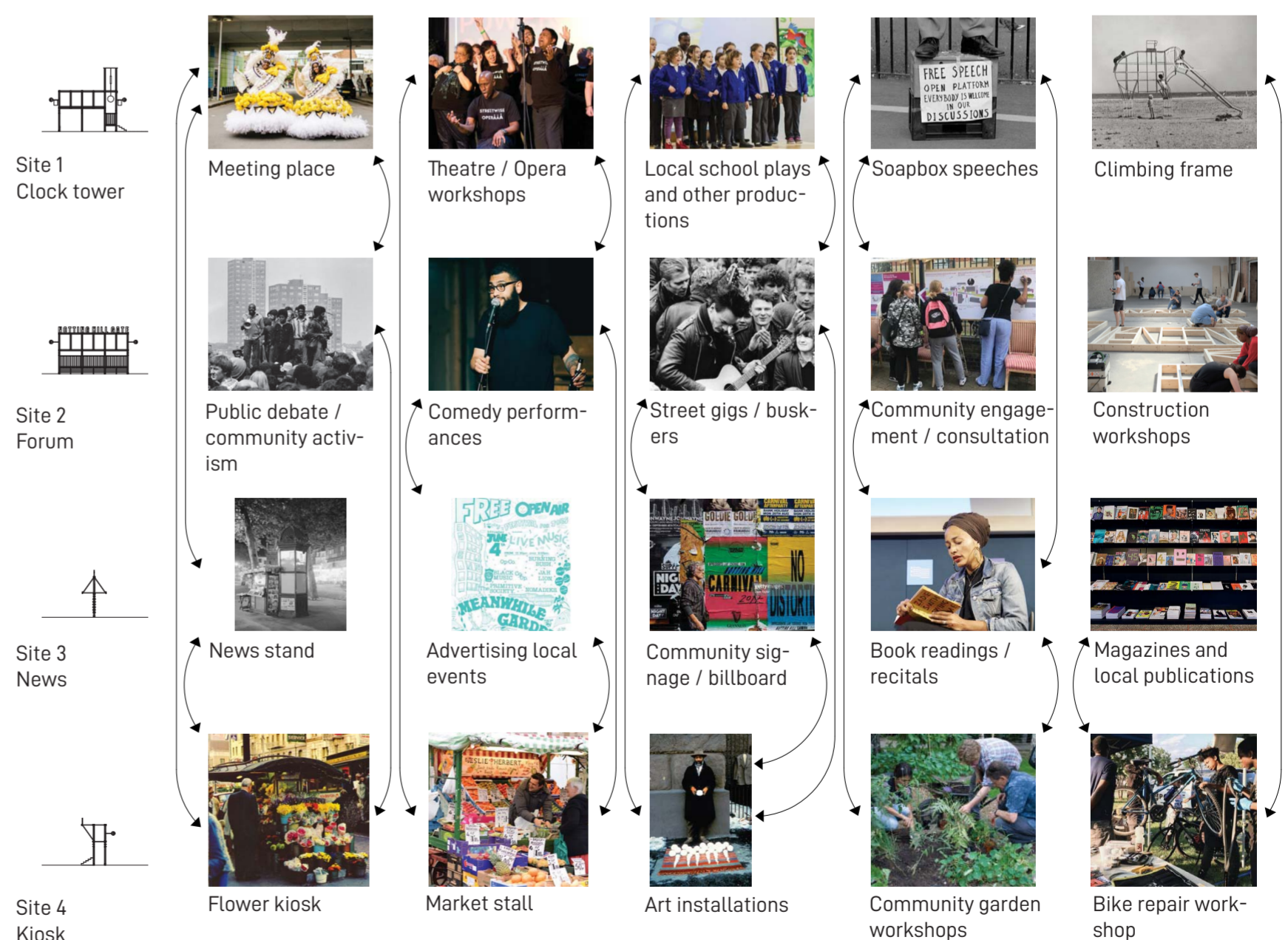
Location Plan, Four Key Sites

Proposal

Addressing four key sites along Notting Hill Gate, the spaces defined by columns are imagined as civic structures. The colonnaded frames, reminiscent of toll gates, form a buffer between pedestrians and traffic and serve as landmarks. The family of structures make places for gathering and happenstance meetings or could afford more specific functions such as a flower kiosk, bandstand, clock tower, market stall or news stand.

The columns are joined with a colourful frieze depicting local stories, myths, events, installations and important figures, printed onto fabric and stretched over the lightweight timber structures. At night the structures will be illuminated with the timber frames visible through the fabric like a lantern. This surface treatment could be expanded to cover building elevations or filling gaps in the main streets, these can be the location of artist's projects, murals or temporary signs for the area's community, arts and other activities. Elemental 'kit of parts' construction will allow the structures to be modified, moved or easily recycled. The knock down construction facilitates replacement of frieze panels and a shifting programme of decoration and use, which the local community will be encouraged to use, curate and engage with.

This open infrastructure has the potential to encourage socially equitable spaces reflecting the needs, interests and culture of the local community, enable a lively and changing (and extendable) tapestry of activity, flexible for a wide range of public and community uses, along with lighting installations, projections, street furniture and way finding signage.



An open Infrastructure enables a lively, changing and interchangeable tapestry of activity

Please scan this QR code to submit feedback on the proposed competition entry



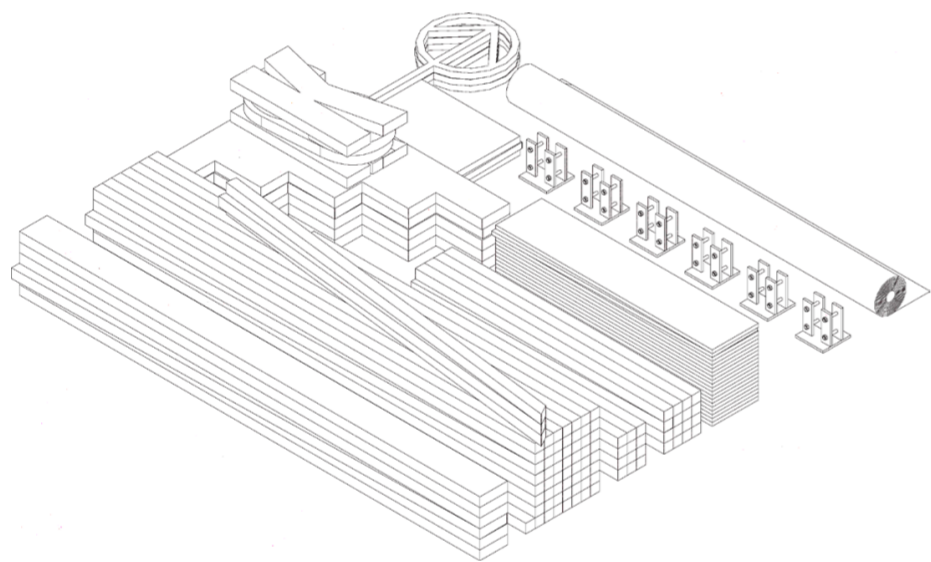
Colonnade of Colour

thinkFoundation/Maich Swift/Wood Street Walls/Linett Kamala/Greg Bunbury

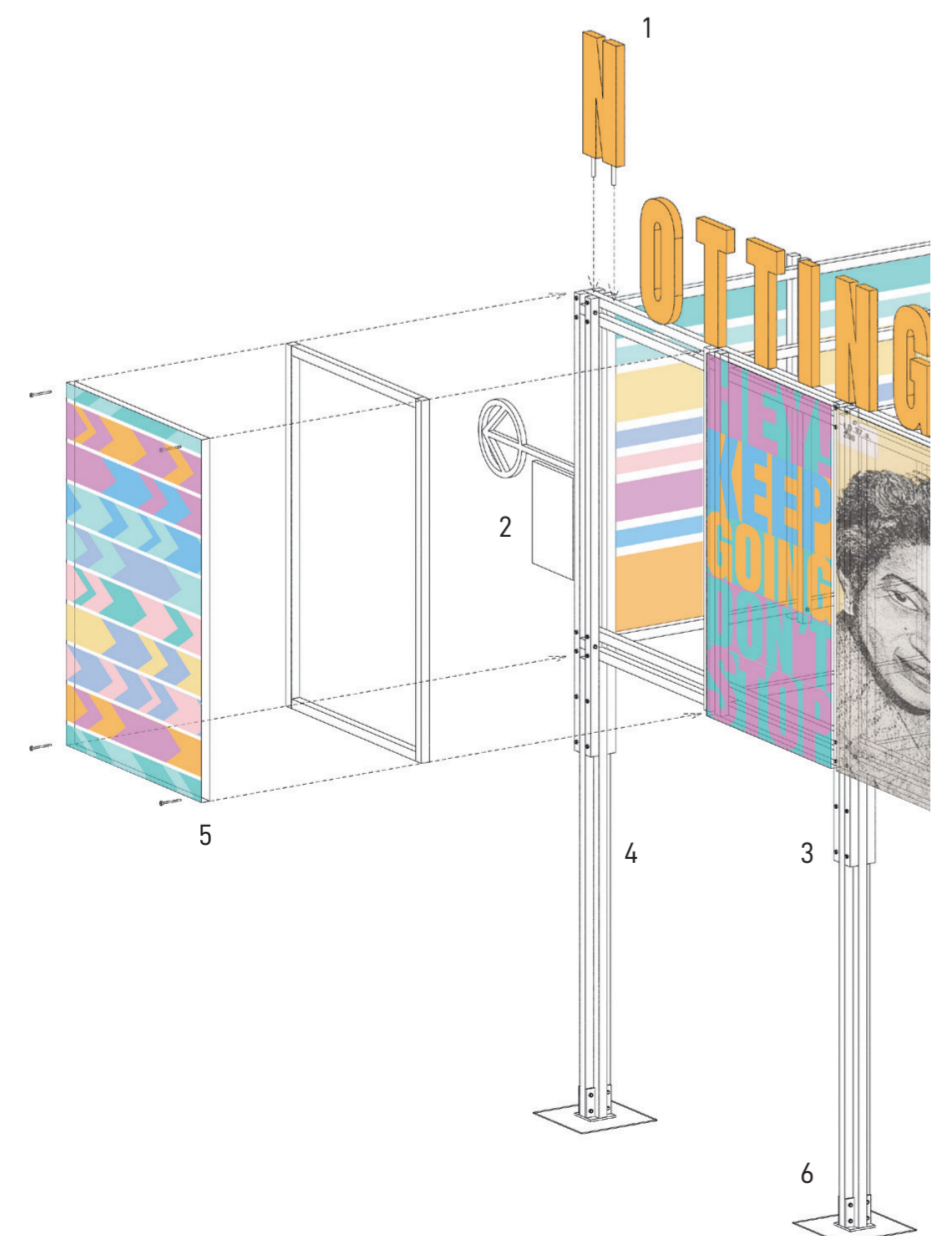
A Preview of the Design



At night the structures will be illuminated like a lantern

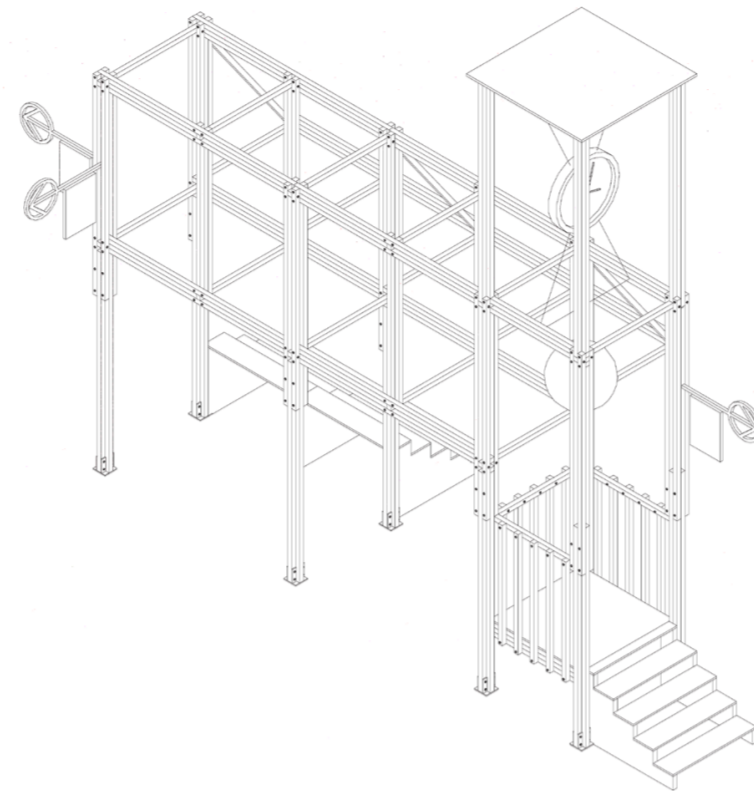


Using elemental construction, the 'kit of parts' structures can be modified, moved or easily recycled

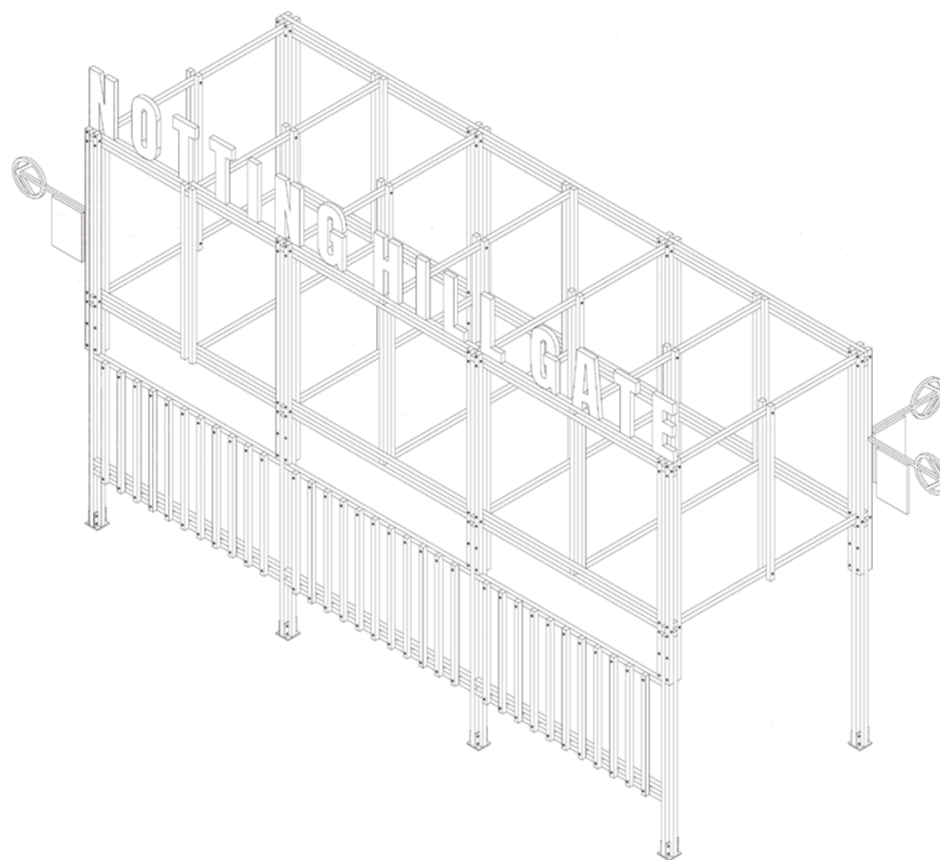


1. CNC cut Medite Tricoya timber lettering
2. CNC cut Medite Tricoya timber signage
3. Stainless steel bolted connections
4. Accoya timber framework
5. Natural fabric banner coated with ReActivair
6. Galvanised steel column shoes

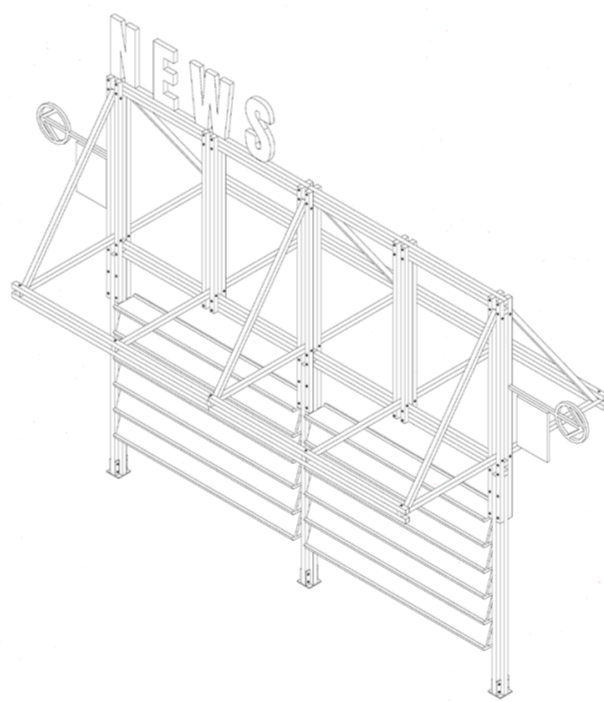
Frieze panels and lettering can be adjusted to correspond with the changing function of the structures



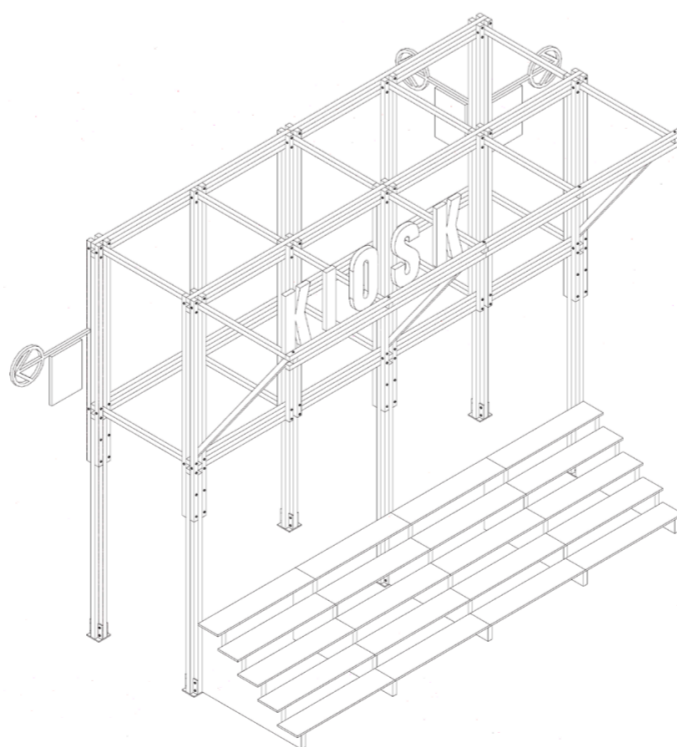
Site 1 Clock tower 2m w x 5m l x 5.5m h



Site 2 Forum 2m w x 6m l x 3.5m h



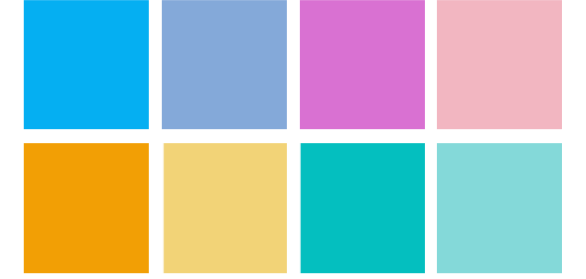
Site 3 News 2m w x 4m l x 3.5m h



Site 4 Kiosk 2m w x 4m l x 3.5m h

A Guide to Colour and Typography

Inspired by the streets, businesses, and colourful characters that make up the area, our colour palette evolves those colours into a full design system



This system can be applied as block colour, geometric patterns, large letterforms or interchangeable panels



Taking cues from Kensington & Notting Hill's historical connections with the printed word, and their long-standing principles around community organising, large directional graphics intersect impactful headline-style typography

Team

Wood Street Walls are a London based organisation working to empower local communities and artists in public space. They use the power of art and creativity and highlight key social issues and causes that affect London and the UK.

Maich Swift received considerable exposure as the winners of the Antepavilion 2019 with their Potemkin Theatre. In 2020 the practice was named Architects' Journal 40 under 40 and included in the Architecture Foundation New Architects 4 Publication, a catalogue of the UK's most exciting emerging practices in the past decade.

At thinkFOUNDATION's core is a social mission to increase diversity in the creative and construction industry and help those furthest from employment pathways achieve social mobility through work.

Greg Bunbury is a British-born, award-winning Graphic Designer, Creative Consultant, Diversity & Inclusion Consultant and public speaker of Caribbean heritage.

Linett Kamala is an interdisciplinary artist who progressed to the top of the education profession in an executive position for a multi-academy trust, whilst still working as a creative. Her personal educational journey and how it links with the life stories of others forms the basis for much of her work.